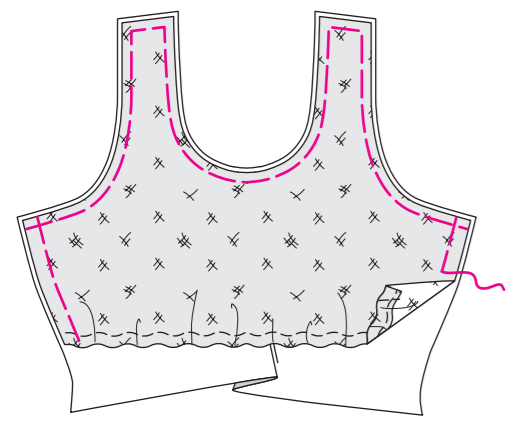
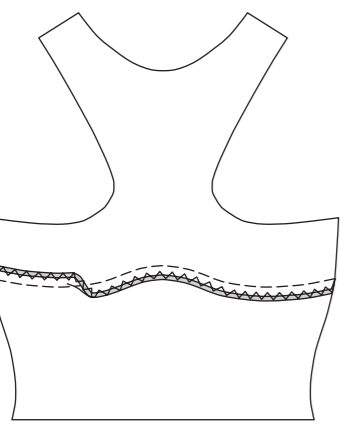
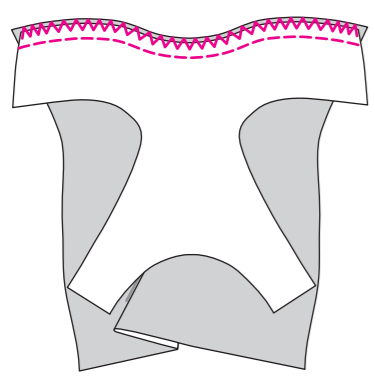




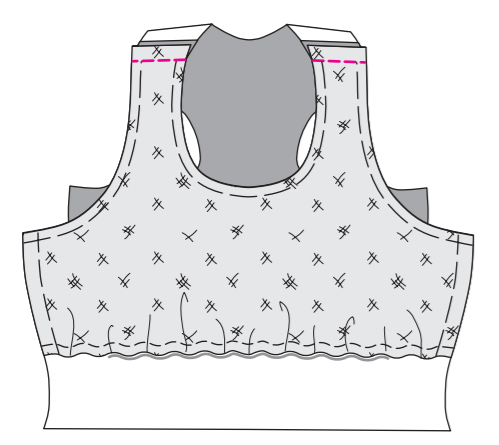
4. Pin bra to front, wrong sides together, matching center fronts and having edges even at neckline, shoulders, armholes and side seams. Stitch along seamlines using long machine stitches.



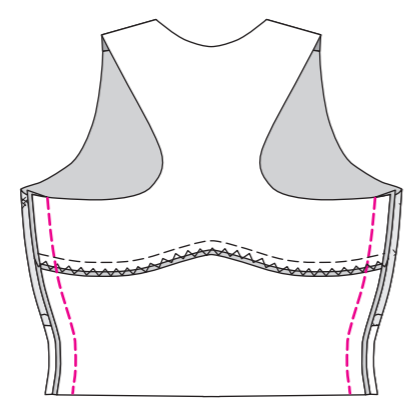
5. Stitch yoke to back, right sides together, at yoke seam. Press seam allowances toward back.



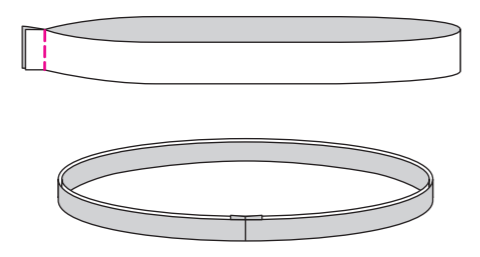
6. Pin front to back, right sides together, at slightly forward shoulder seams. Press seam allowances open.



Pin back to front, right sides together at side seams, stretching bra elastic and stitch. Press seam allowances open.



7. Stoffbruch neck band, right sides together, and stitch center back seam; use a straight stitch. Press seam allowances open. Stoffbruch neckband wrong sides and raw edges together.



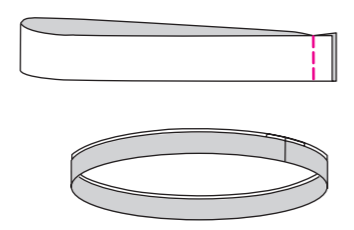
Pin neck band to right side of top at neckline, with raw edges even, matching center front, seam to center back. Stitch in a 3/8" (1 cm) seam, stretching neck band slightly. Press seam allowances toward top.



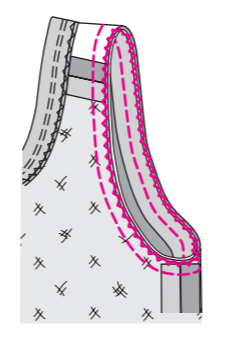
On outside, stitch top close to seam.



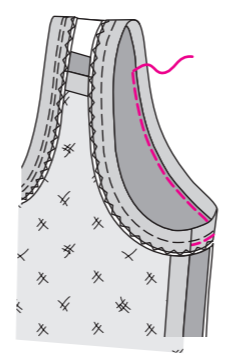
8. Stoffbruch armhole band, right sides together, and stitch side seam; use a straight stitch. Press seam allowances open. Stoffbruch armhole band wrong sides and raw edges together. Repeat for other band.



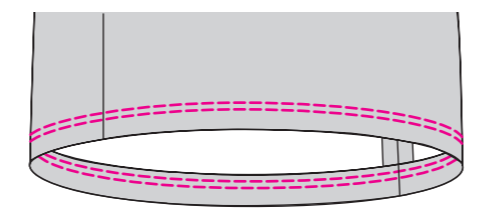
Pin armhole band to right side of top at armhole, with raw edges even, matching side seams and dots to shoulder seams. Stitch in a 3/8" (1 cm) seam. Press seam allowance toward top. Repeat for other armhole.



On outside, stitch top close to seam.



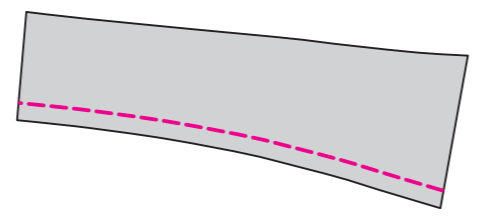
9. Overcast bottom edge of top. Stoffbruch bottom edge 5/8" (1.5 cm) to wrong side and press. Stitch close to edges of hems using a double needle or with zig zag stitches.



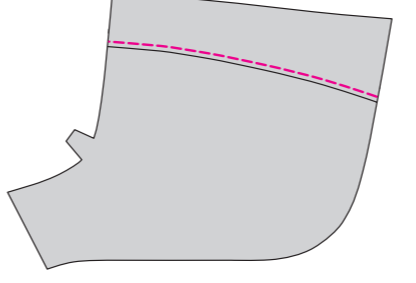
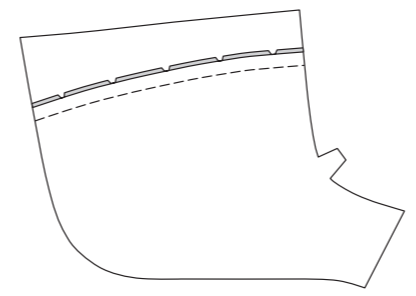
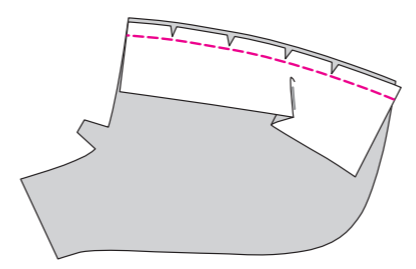
**SHORTS C**

5/8" (1.5 cm) seam allowances are included.

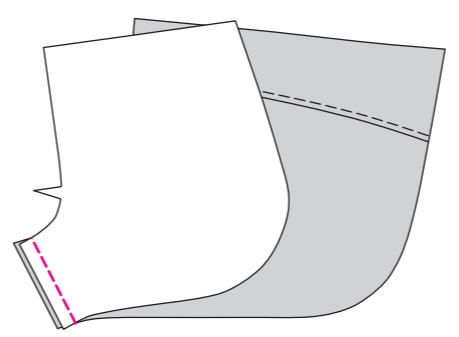
1. Staystitch yoke seam of yoke. (See Staystitching in Sewing Procedures.)



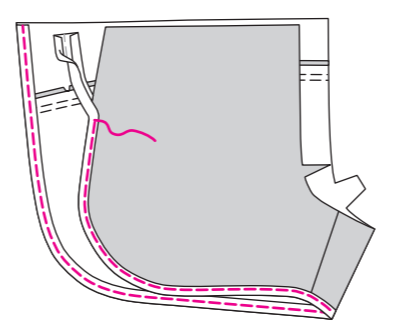
Pin one yoke to one back, right sides together, at yoke seam. Stitch. Press seam allowance toward yoke. On outside, stitch yoke 1/4" (6 mm) from yoke seam.



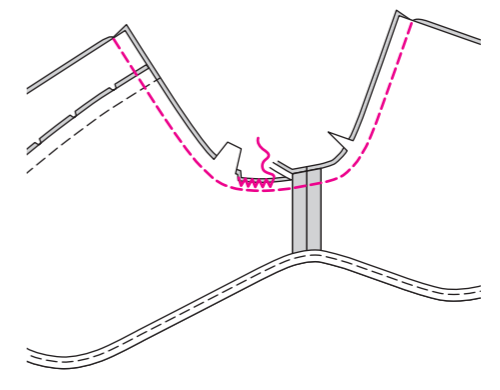
2. Pin front to back, right sides together, at inside leg seam.



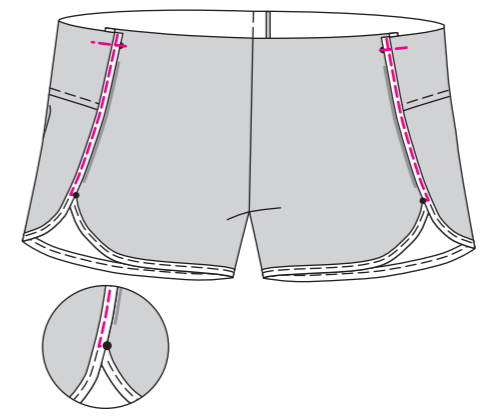
3. Starting at casing seam of right yoke, encase outer and bottom edges of front and back with bias tape, keeping wider portion of bias tape to inside. Stitch close to fold.



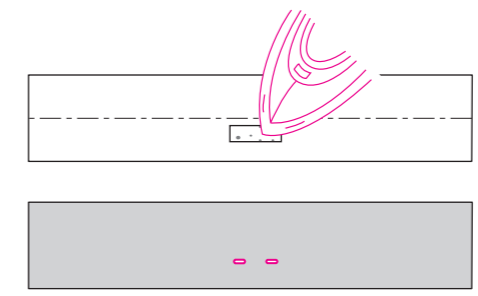
4. Pin front and back sections, right sides together, matching notches and inside leg seam. Stitch from front waist edge to back waist edge. Trim crotch seam allowances between notches to 3/8" (1 cm) and overcast together. Press center front and center back seam allowances to one side.



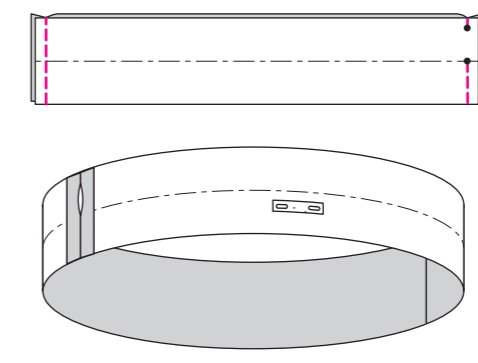
5. With casing seam edges even, lap back over front, placing outer edge of bias tape at dots on front, as shown. Stitch along previous stitching of bias tape through all layers, pivoting across bias tape to lower dot.



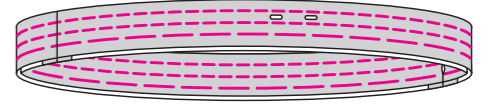
6. Mark buttonhole placements on waistband. On wrong side, fuse a scrap piece of interfacing under buttonhole placements and make buttonholes.



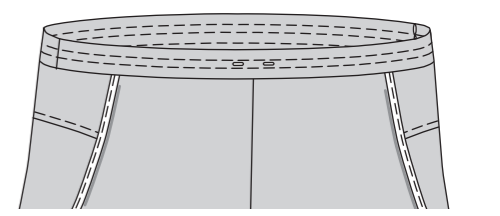
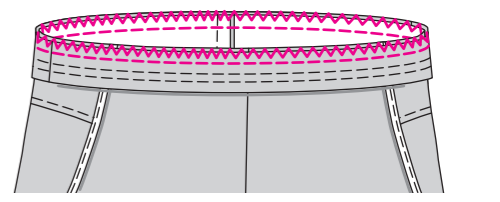
7. Stitch waistbands, right sides together, at side seams leaving left side open between dots.



Stoffbruch waistband wrong sides and raw edges together and press to crease. Baste along 5/8" (1.5 cm) casing seam and along stitching lines to make casings.

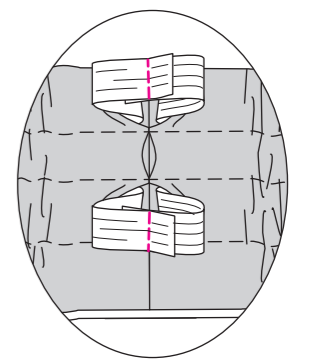


8. Pin waistband to shorts, right sides together and buttonhole side down, at casing seam, matching center fronts, center backs, and side seams of waistband to dots on yoke. Stitch. Overcast edges together and press seam allowances toward shorts.

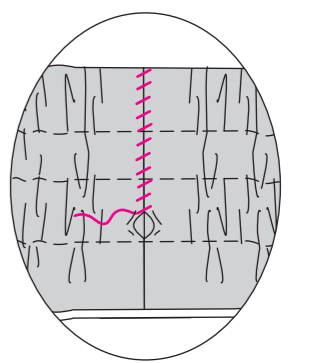


Cut two pieces of 3/8" (1 cm) wide elastic the following length:  
XS - 26 1/2" (67 cm)  
S - 29" (73.5 cm)  
M - 32" (81 cm)  
L - 35" (89 cm)  
XL - 40" (102 cm)

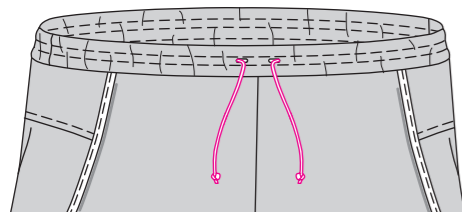
9. Using a safety pin, insert elastic into waistband through upper and lower openings and guide through waistband; make sure elastic is not twisted. Pull out elastic and overlap ends 3/8" (1 cm) and pin. Stitch across elastic (see illustration).



Pull on waistband to get elastic back into waistband and distribute gathers evenly. Stitch entire opening closed with hand stitches.



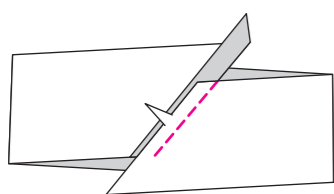
10. Insert drawstring into waistband through button-holes. Tie knots at ends.



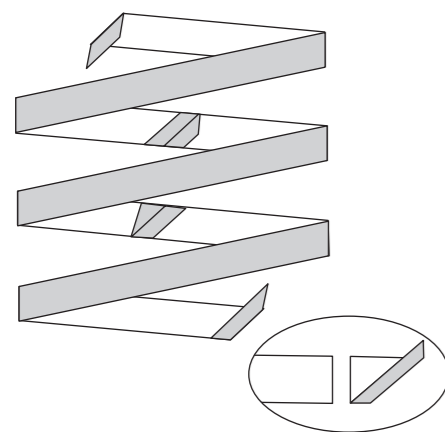
### SHORTS D

5/8" (1.5 cm) seam allowances are included.

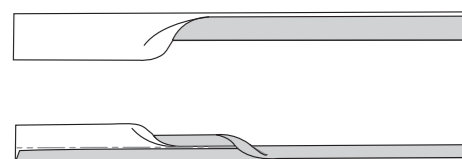
1. With right sides together, pin ends of binding together, matching notch. Stitch. **NOTE:** Edges will not be even at ends of seam.



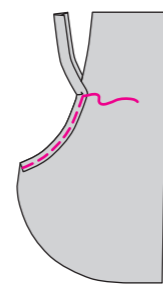
Starting at one extending end, cut along cutting line, forming one continuous bias strip, as shown. Trim end, as shown.



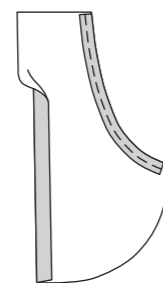
Stoffbruch the binding wrong sides together and press to form a crease. Stoffbruch the raw edges to the crease, fold on the crease again, and press the binding.



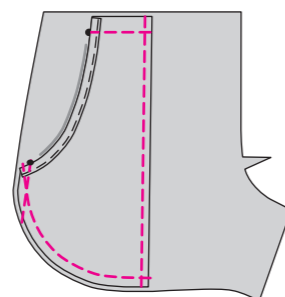
Encase the inner curved edge of pocket with binding, having ends even with casing seam and outer curved edge. Stitch close to pressed edge of binding.



2. Stoffbruch 5/8" (1.5 cm) seam allowance on straight edge of pocket to wrong side. Press.



Pin wrong side of pocket to right side of front, matching dots and having raw edges even. Stitch 1/4" (6 mm) from pressed straight edge of pocket. Stitch casing seam and outer curved edge in a 3/8" (1 cm) seam to keep in place through all layers. Repeat for other pocket.



3. Follow Shorts C, steps 1 through 10.